

Disabling Driver Signature Enforcement on Windows 8

Unlike previous versions of the Windows operating system, Windows 8 imposes strict limitations on driver signing. Because of this, unsigned drivers require extra steps for installation.

You will need to restart your computer several times throughout the course of these instructions. We recommend you print them before you begin, or use a separate computer to follow along.

We are trying to restart the computer in an *Advanced Startup* mode where we can turn Disable Driver Signing. The route to get to *Advanced Startup* is different for Windows 8 versus 8.1. The pictures in this document reflect Windows 8. Refer to the text regarding differences in Windows 8 vs Windows 8.1.

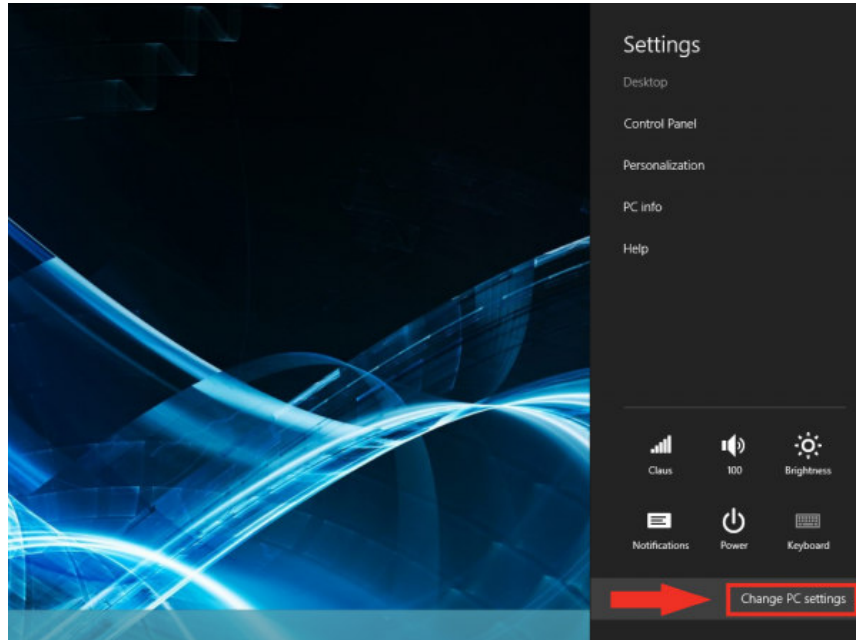
What to do:

1. Hold down the Windows key on your keyboard and press the letter C to open the Charm menu, then click the gear icon (**Settings**).

(Same for Windows 8 and 8.1)



2. Click **Change PC Settings**.
(Same for Windows 8 and 8.1)



Remember, we are trying to get to the **Restart Now** button under *Advanced Startup*.

In Windows 8, the **Restart Now** button is under *General* (as shown in the pictures on this page)

In Windows 8.1, the **Restart Now** button is under **Update & Recovery** -> **Recovery**.

FOR Windows 8, do Step 3 to get to see *Advanced Startup*

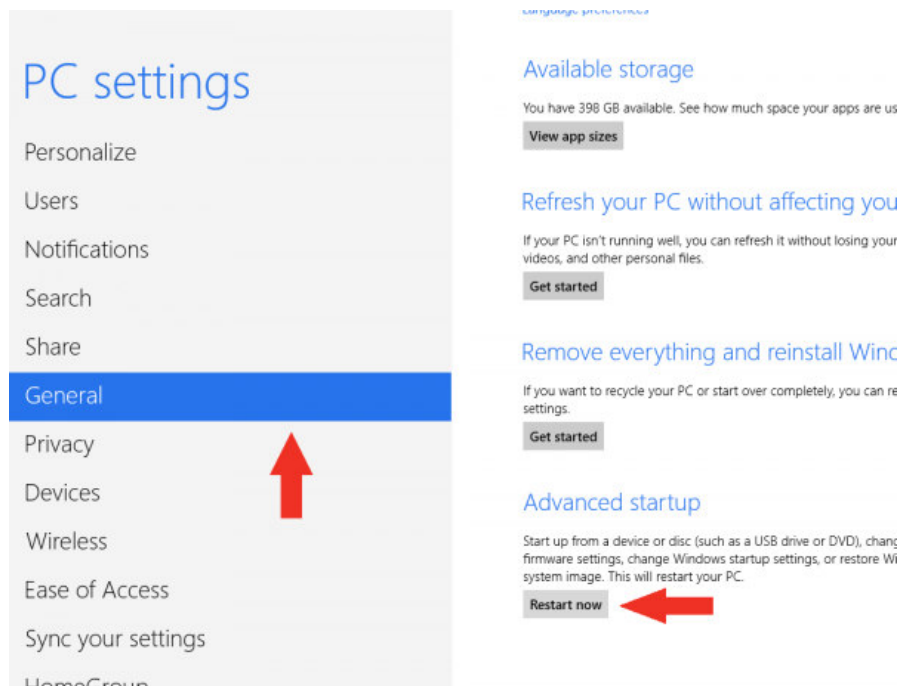
3. Click **General**. (Windows 8)

FOR Windows 8.1, do Step 4 to get to see *Advanced Startup*

4. Click **Update & Recovery**, then click **Recovery** (Windows 8.1)

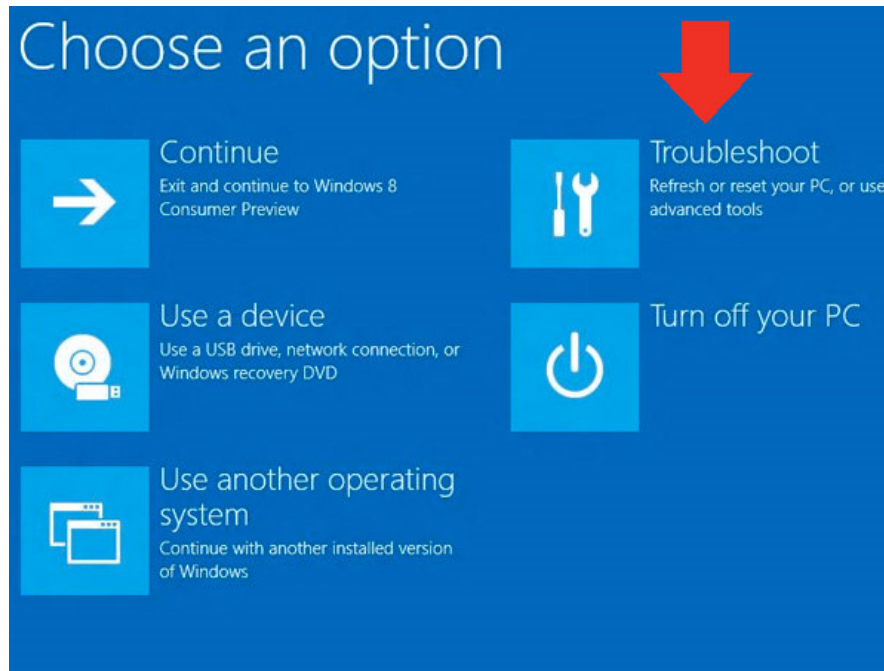
5. Under *Advanced Startup*, click **Restart Now**.

(Same for Windows 8 and 8.1)

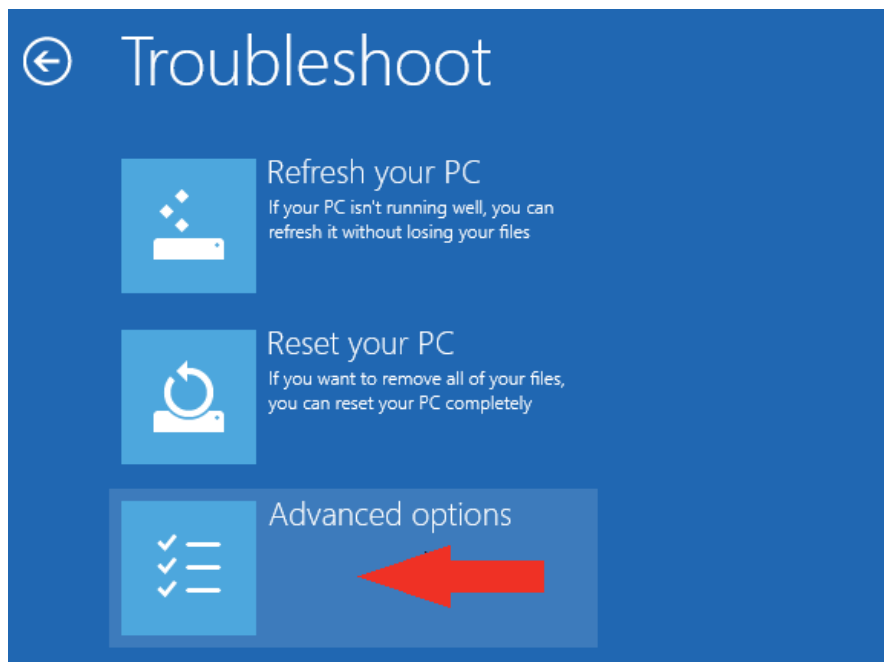


This picture shows Windows 8, if you are running Windows 8.1, remember, we are trying to get to the “**Restart Now**” button under *Advanced Startup* similar to what is shown in the right hand pane of the picture above. Refer to steps 3 and 4 above. Step 3 for Windows 8, and Step 4 for Windows 8.1.

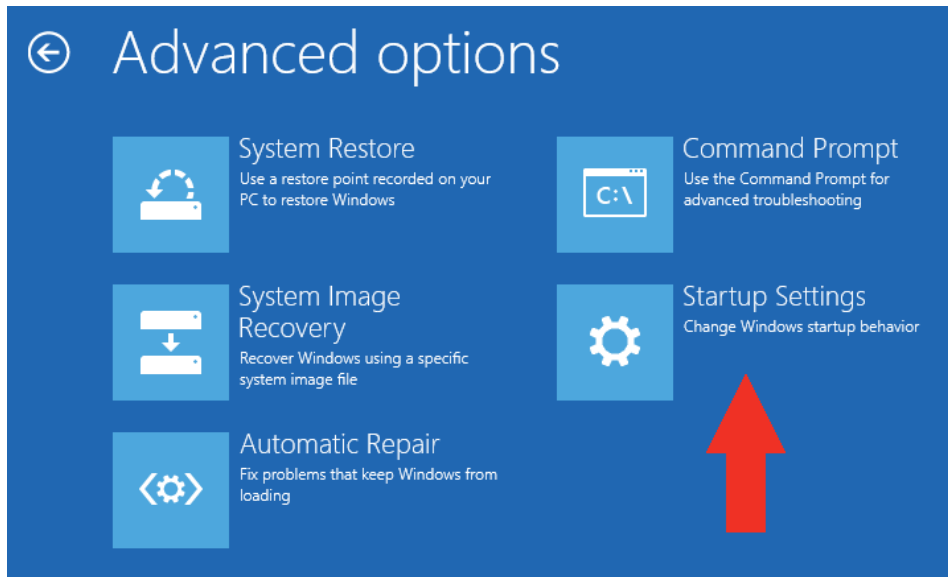
6. After restarting, click **Troubleshoot**.



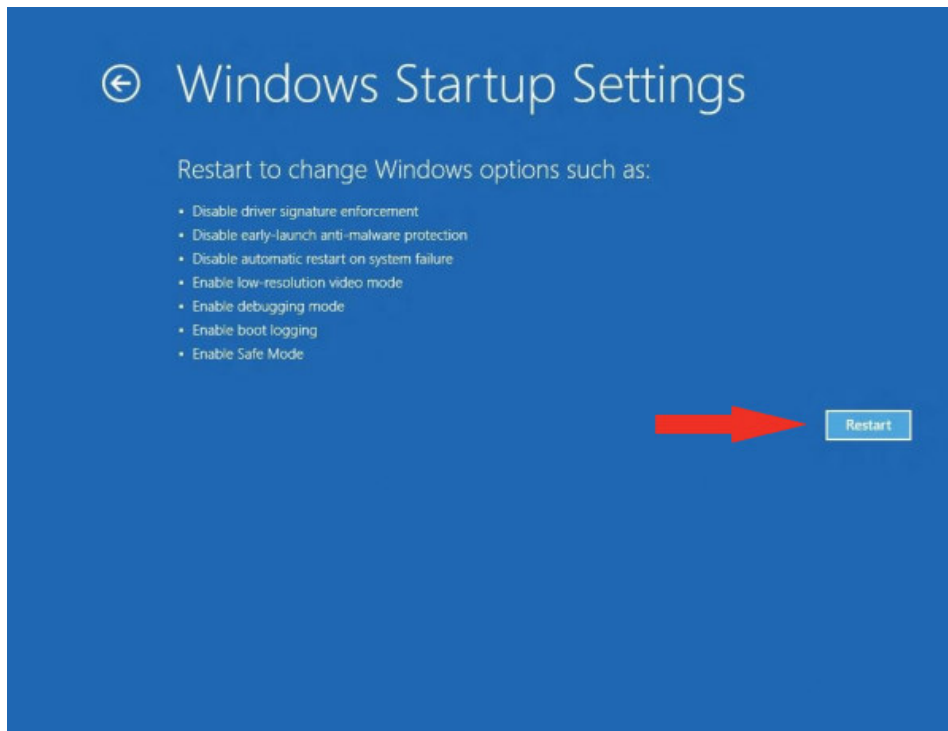
7. Click **Advanced Options**.



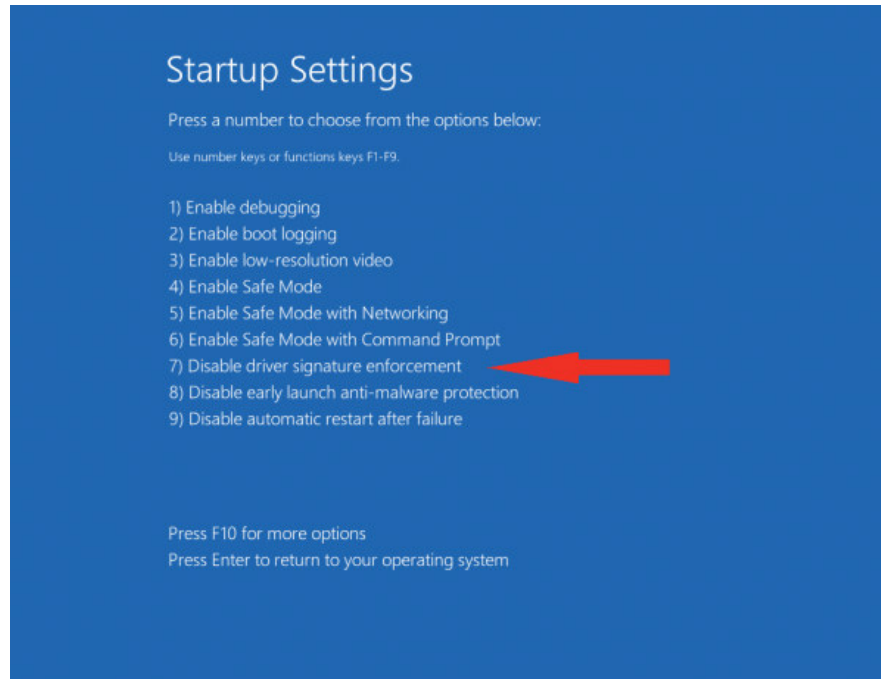
8. Click **Startup Settings**.



9. Click **Restart**



10. After restarting your computer a second time, choose Disable Driver Signature Enforcement from the list by typing the number **7** on your keyboard.



Your computer will restart automatically.

11. After restarting, you will be able to install the drivers using the EagleUSB64.exe file located in the Eagle section of the Transceiver Downloads page on www.tentec.com.
12. Once the driver is installed, restart your computer and driver signature enforcement will be in effect again.