



## USB TO UART DRIVER INSTALLATION INSTRUCTIONS FOR EAGLE FIRMWARE VERSION 2.XXX

All files mentioned in this document are located at the Model 599 section of the Transceiver Downloads web page on the TEN-TEC web site.

### COMPATIBILITY:

This instruction sheet is for customers who have a TEN-TEC product that utilizes the Eagle Firmware Version 2.xxx USB to UART interface for CAT/Logging interfacing. This process shows how to install the driver on Windows XP, 7, and 8/8.1.

This process includes an Eagle with firmware version 2.001 or greater, or the Argonaut VI with firmware version 2.001 or greater.

### SPECIAL NOTE:

Version 1.xxx of both the Eagle and the Argonaut VI utilize a different driver installation process than shown in this document. For Version 1.xxx based Eagle and Argonaut VI radios, follow the instructions in the link in the TEN-TEC website titled:

**USB TO UART DRIVER INSTALLATION INSTRUCTIONS  
FOR WINDOWS XP, VISTA, AND WINDOWS 7  
32-BIT AND 64-BIT**

This instruction sheet provides instructions for Windows XP / 7, and Windows 8/8.1.

### HARDWARE BACKGROUND:

The USB to UART Rigs provide a standard USB 1.0/2.0 interface for two purposes:

- 1) Connection to a PC or other USB Hub device for control or logging or monitoring purposes.
- 2) Connection to a PC for firmware updates using the standard TEN-TEC upgrade utility.

The physical interface used to connect with the Rig is a standard USB cable. A standard USB cable will have a type A connector for the computer / Hub and a USB type B connector for the Rig.

NOTE: This is **NOT** the interface for the TEN-TEC Model 712 USB Sound Card. The 712 has its own set of drivers, and should automatically install and be visible as a “USB Audio Codec” in Windows Device manager.

## **PREPARATION:**

Download and unzip the driver files to your computer. These files are found at the Model 599 section of the Transceivers Download page on the TEN-TEC website, link is titled

### **USB to UART Driver for Eagle Firmware Version 2.xxx**

It is recommended to download them to your “Downloads” folder. Unzip this file using any unzip utility of choice, e.g. Winzip or 7-zip to

**Downloads\USB to UART Driver for Eagle Firmware Version 2.xxx**

For the pictures in this instruction sheet, the Windows XP steps, the folder that they were downloaded to was as follows:

**C:\Documents and Settings\John\My Documents\Downloads\**

For the pictures in this instruction sheet, for the Windows 8.1 steps, the folder that they were downloaded to was as follows:

**C:\Users\Eng\Downloads\**

and the appropriate .zip file was subsequently extracted into:

**...Downloads\USB to UART Driver for Eagle Firmware Version 2.xxx**

Then, you should see two files in that folder:

**cdc\_ntxpvista78.cat**

**cdc\_ntxpvista78.inf**

The ini file is the actual driver information file and the cat file is the signature file from Microsoft that has passed WHQL certification that is required for Windows 8/8.1. Otherwise known as Driver Signature Enforcement.

## WINDOWS 7 / 8 /8.1 INSTALLATION:

Depending upon your Windows version and distribution, the steps may not be exact, as they have varied over Windows 7, 8, and 8.1, home versus professional, etc., but the intent is to get to the step where you select the specific driver. The steps to install the driver for Windows 7 and 8 installations are very similar to those followed for Windows XP.

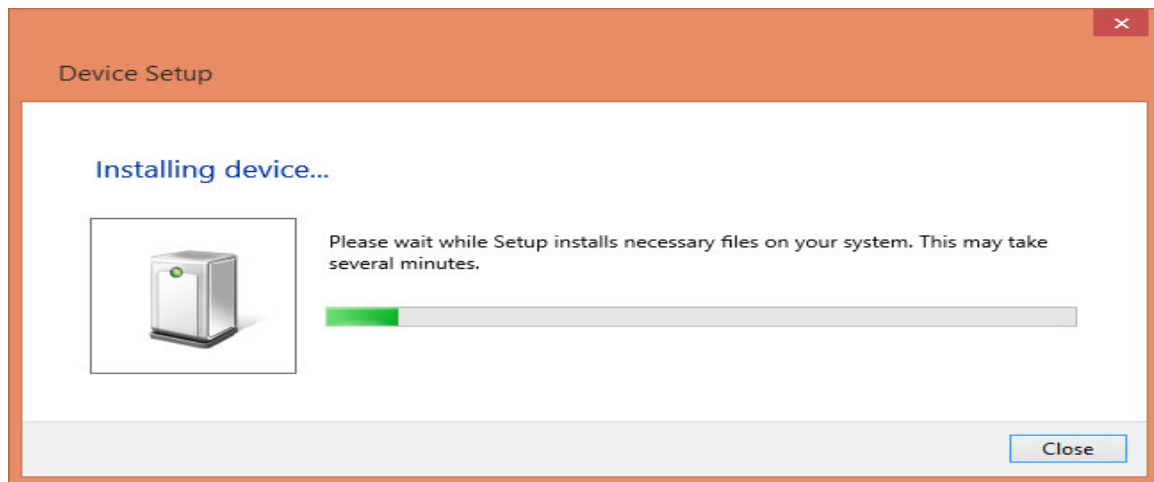
Depending upon your security settings, you may need to perform this process using an account with administrator privileges, and/or, at times tell various Windows security features such as UAC to ignore and/or continue and/or “run as administrator”.

The whole goal is to get to the screen where you can browse the computer for the drivers and point to the file folder you downloaded and extracted the zip file mentioned in “Preparation” above:

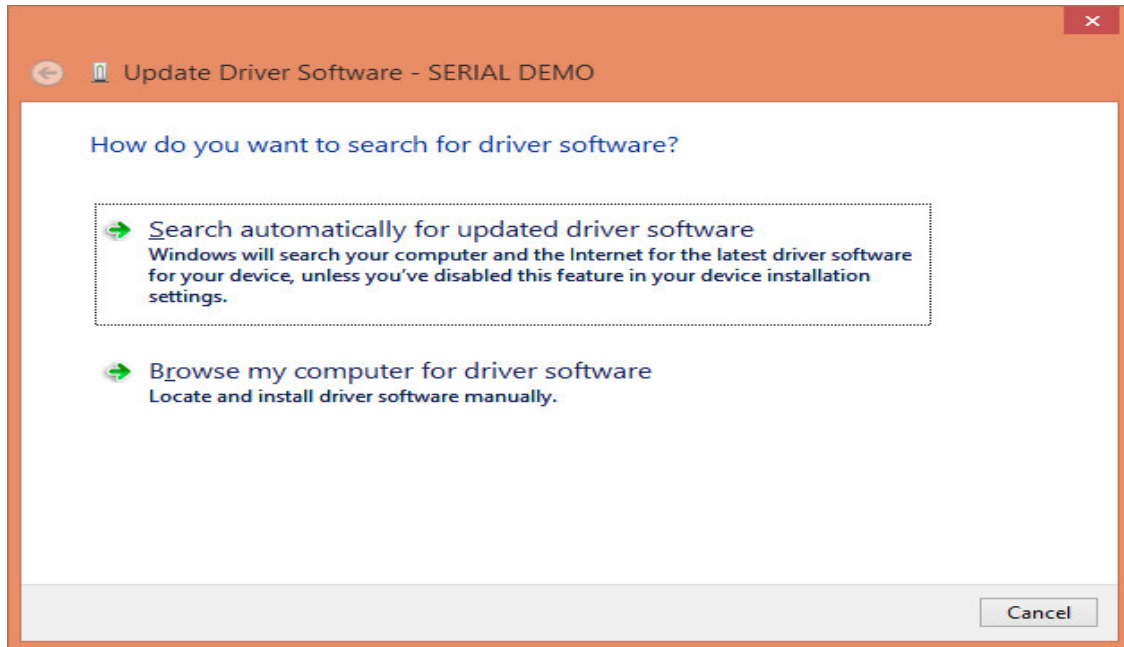
- 1) Power on the Rig.
- 2) Connect the USB cable between the Rig and the PC.

You may hear Windows notification that hardware was inserted into the USB.

- 3) The following display will be shown:

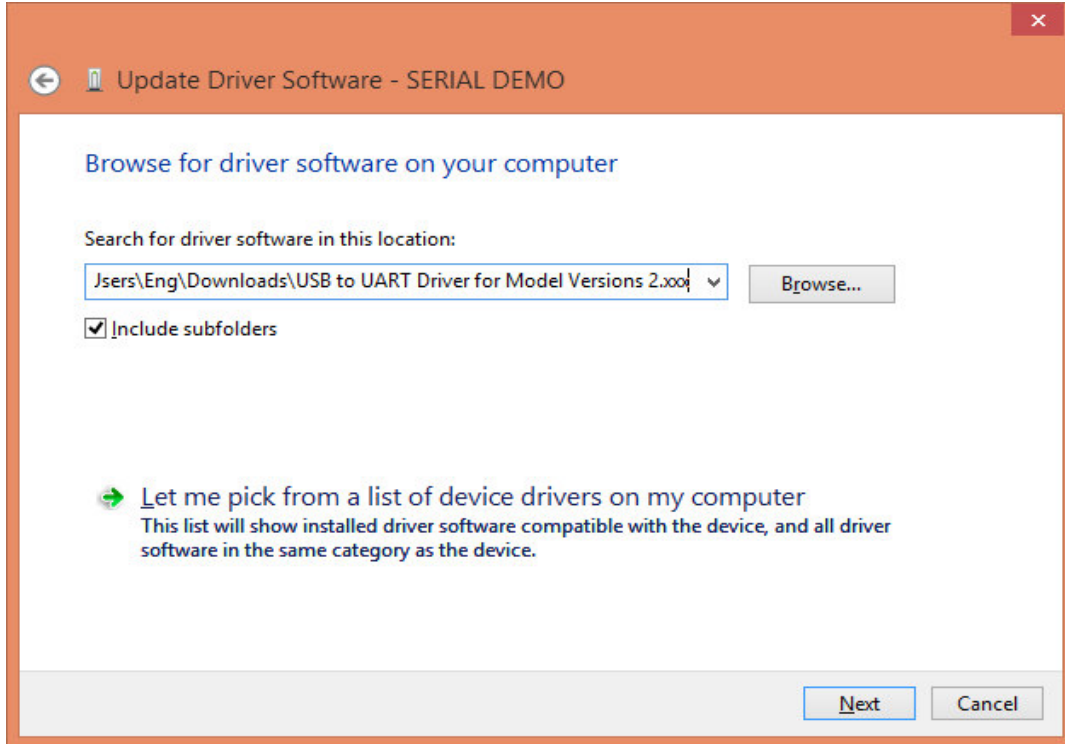


Again, the steps may vary, in this given setup though, Windows 8.1 eventually showed a screen as below:



4) Select “Browse my computer for driver software”

The following display will be shown:



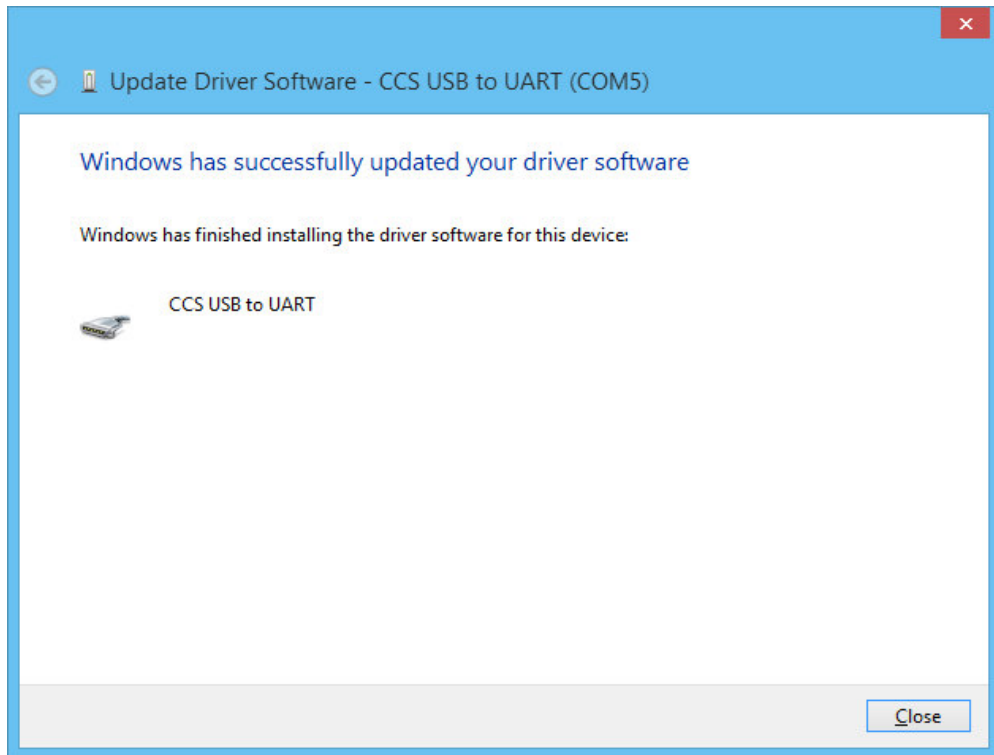
5) Select “Browse” on the right, and then work your way through the folder selection until you end up with the folder where you placed the unzipped files. For this setup, the folder ended up as:

**C:\Users\Eng\Downloads\USB to UART Driver for Eagle Firmware Version 2.xxx**

6) Then Select “Next”

You will see a screen pop up saying that Windows is installing the software....

Once Windows finally finishes installing the software, you should see the following screen:

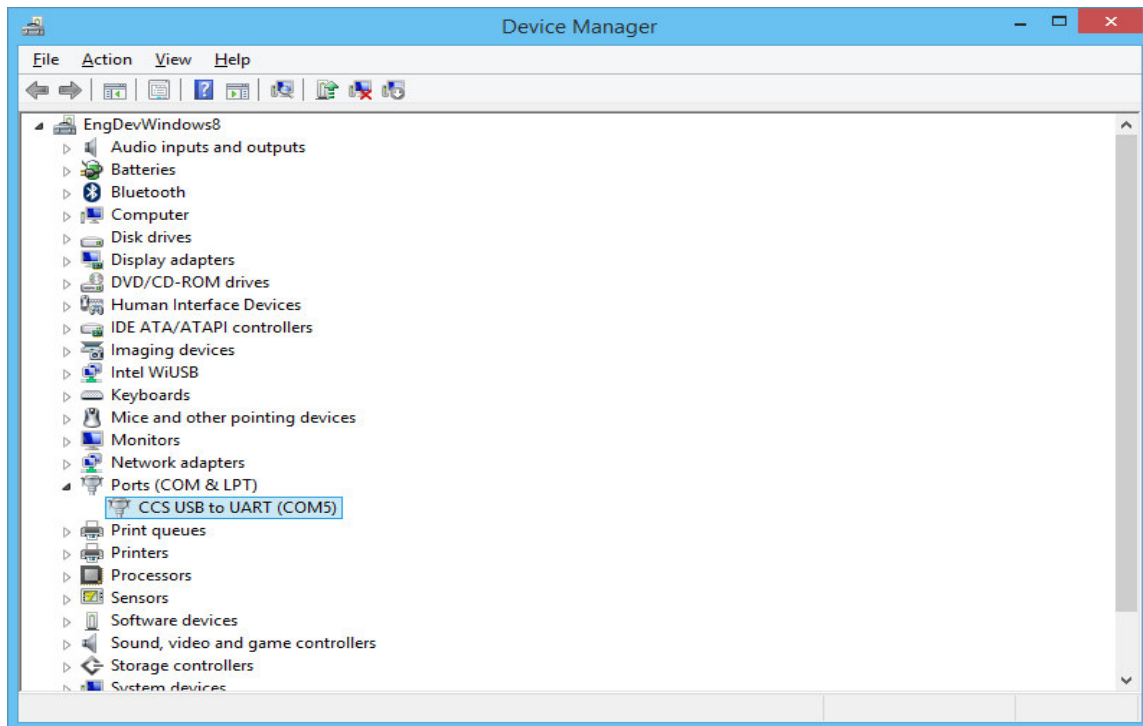


For this specific installation, the com port chosen was Com5, see the top of the screen for your com port assignment by Windows.

6) Select “Close”

## Operational Hints/Tips:

If at any time you need to see what “port” the Rig is connected to, go back into Device Manager, expand the “Ports (COM & LPT)” selection, and you should see “USB to UART (COMx)”. Note the x in the COMx that is reported by Device Manager. You will use this number when running cat programs, the update.exe program, etc.



If required, you can change the actual port number being used to a lower number if required. Sometimes the update program on some computers will require a port number lower than 10. To do so, double click the USB to UART (COMx) text, go to port settings, select advanced, and select a different COM Port Number from the pull down box. It may display a warning message, if it does, confirm/ok the change. Click OK/Confirm/etc. until all windows are closed. Disconnect the Eagle, wait a few seconds, reconnect the Eagle, and you should see the new port number in Device Manager.

NOTE: when you plug the USB cable into a different USB port on the PC, it will most likely get a new COMx port number defined. Be aware of this when reconnecting the USB cable to the computer so that you can set it properly in the computer program that you are using to communicate with the Rig.

Remember, Windows might: (varies depending upon Windows Versions)

1 – Automatically run the hardware installation wizard the first time the USB cable is plugged into each physical USB connector on the Computer. For Example, if there are four physical USB ports on a given computer, it will run the hardware installation wizard four times, once for each physical USB port, the first time the Eagle USB cable is connected to said port.

2 – Automatically assigns the virtual comm port numbers for each physical USB port, normally unique from the others. This means that Windows could assign COM8, COM9, COM10, and COM11 separately for the physical USB ports on this 4 USB connector Computer.

It is thereby advisable to do two things once the first USB connection is setup properly and verified to work with your logging and control software. Do both of these items for each physical USB connector on your computer.

1 – Go through the process of connecting the physical USB cable to each of the USB connectors, one at a time, letting the Wizard install the firmware per the steps above.

2 – While the Eagle is connected to a given physical USB connection on the Computer, change the virtual comm port number to one that you know all of your software will support. (through Device Manager)

The above two items will help out in several ways, including:

1 – The ham will have set up the drivers at leisure, and would not have to re-install a driver during a contest in case the USB connector needs to change to another physical USB connector, or if the process is forgotten or misplaced.

2 – The ham will be able to set up the loggers and control programs to this single port, and not have to change them to a different port when time is of the essence, such as during a contest.

If you are going to run two Eagles, or two Argonaut VI's , one Eagle and one Argonaut VI at the same time, then you will need to coordinate which physical USB port gets the appropriate Comm port number, and then use the two appropriately in the control and logging programs.



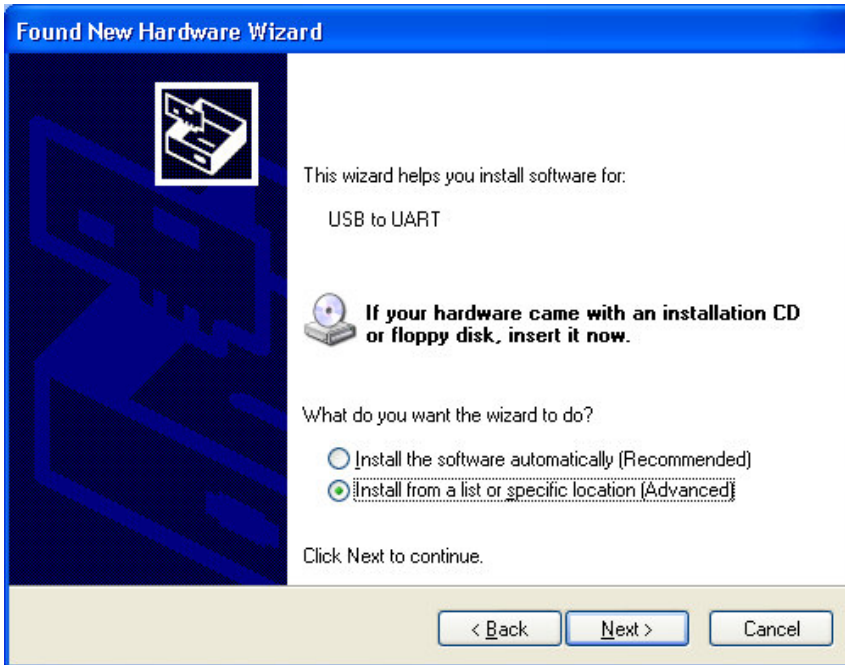
## WINDOWS XP INSTALLATION:

The steps to install the driver for most Windows versions XP and later including some Windows Vista versions is as follows, depending upon your security settings, you may need to do this using an account with administrator privilege:

- 1) Power on the Rig.
- 2) Connect the USB cable between the Rig and the PC.
- 3) When prompted, select... “No, not this time”, and click “Next>”



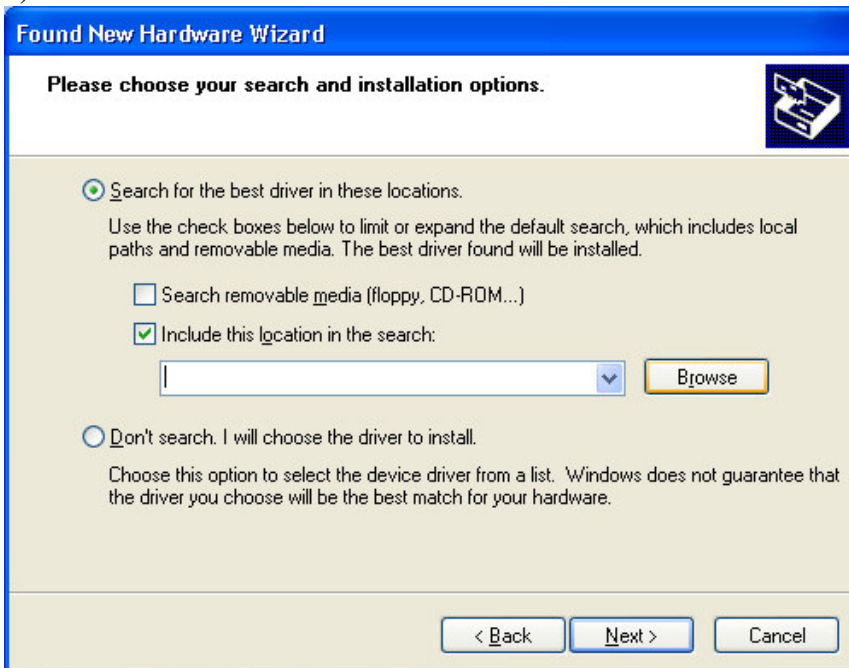
3) When prompted Select “Install from a list or specific location (Advanced), and click “Next>”



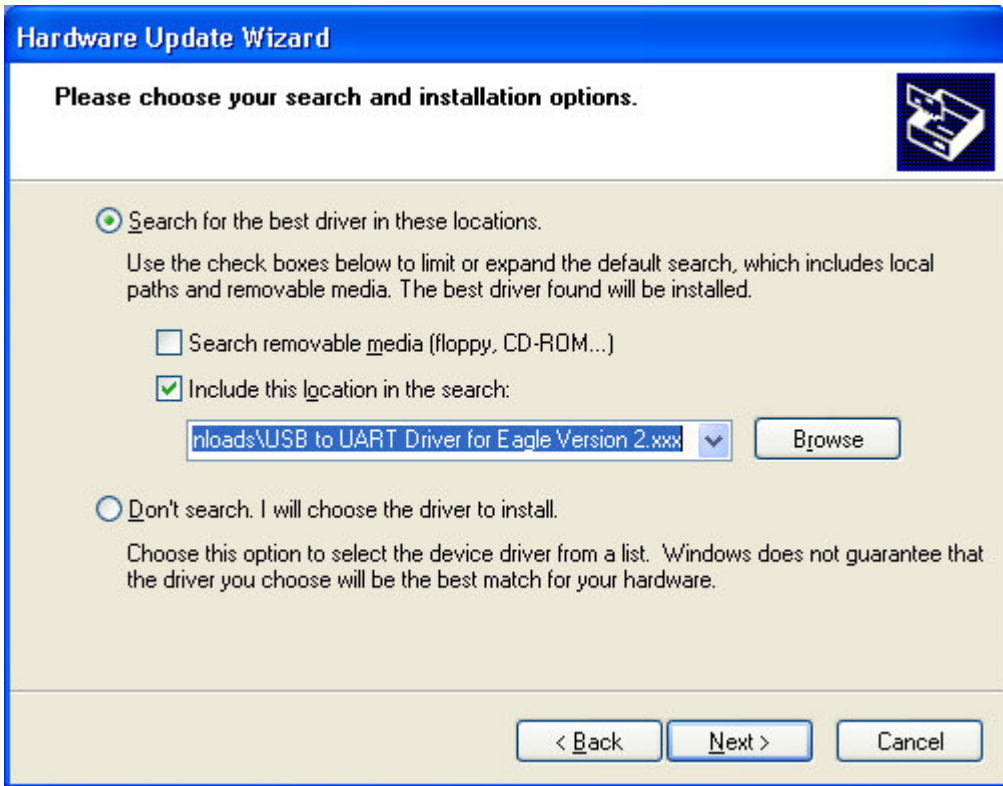
4) When prompted Select “Search for the best driver in these locations.”

5) Select “Include this location in the search:”

6) And click “Browse”



7) Browse through the file selection box to find the folder that you unzipped the drivers and this instruction sheet into. For this session, it was .... C:\Documents and Settings\John\My Documents\Downloads\USB to UART Driver for Eagle Version 2.xxx



7) Select “Next>”

You will then see it searching for a driver.  
“Please Wait while Seraching for a Driver”

If you get a warning message, select “Continue”.

You should now receive the following dialog box and the device will show up in the PORTS list of the Device Manager.



The driver was successfully installed on Windows XP.  
You may now view the port assignment via Device Manager, change the port assignment, or utilize your favorite CAT or Logging program to communicate with the rig via this serial port number.